



SynSupport

– Vi finns för syns skull



IDEA-CX V.I.C

WWW.SYNSUPPORT.COM

SynSupport
Illervägen 15
35245 Växjö

Tel : 0470 72 98 88
Fax : 0470 74 95 80

info@synsupport.com
www.synsupport.com



SynSupport

– Vi finns för syns skull

Congratulation to your choice of magnifying aid.
We hope that IDEA-CX V.I.C will come to help you an enrich your
daily duties

SynSupport Nordic Production AB

Contents.

Page

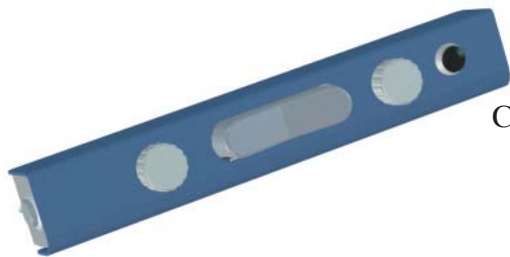
- 3. Included parts
- 4. Assembly and connections
- 6 Functions
- 13 Technical facts and maintenance



SynSupport

– Vi finns för syns skull

Included part to IDEA-CX VIC



Controlpanel



Wesa, for attachment of controlpanel to TFT monitor



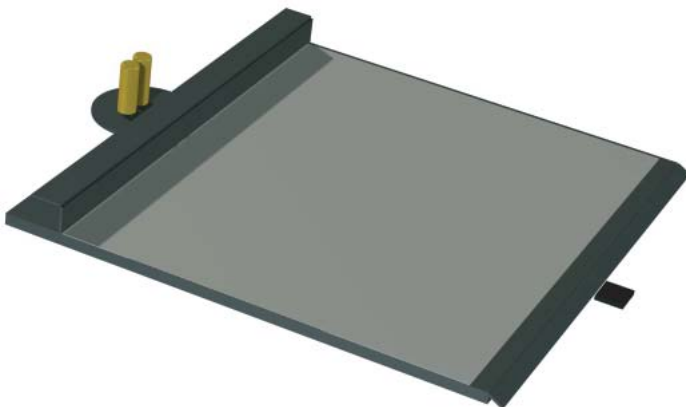
PowerSupply

Camera stand and Camera



Electroni unit (VIC)

XY table



Other items not on picture

Cables

Software

Manual

Allenkeys



SynSupport

– *Vi finns för syns skull*

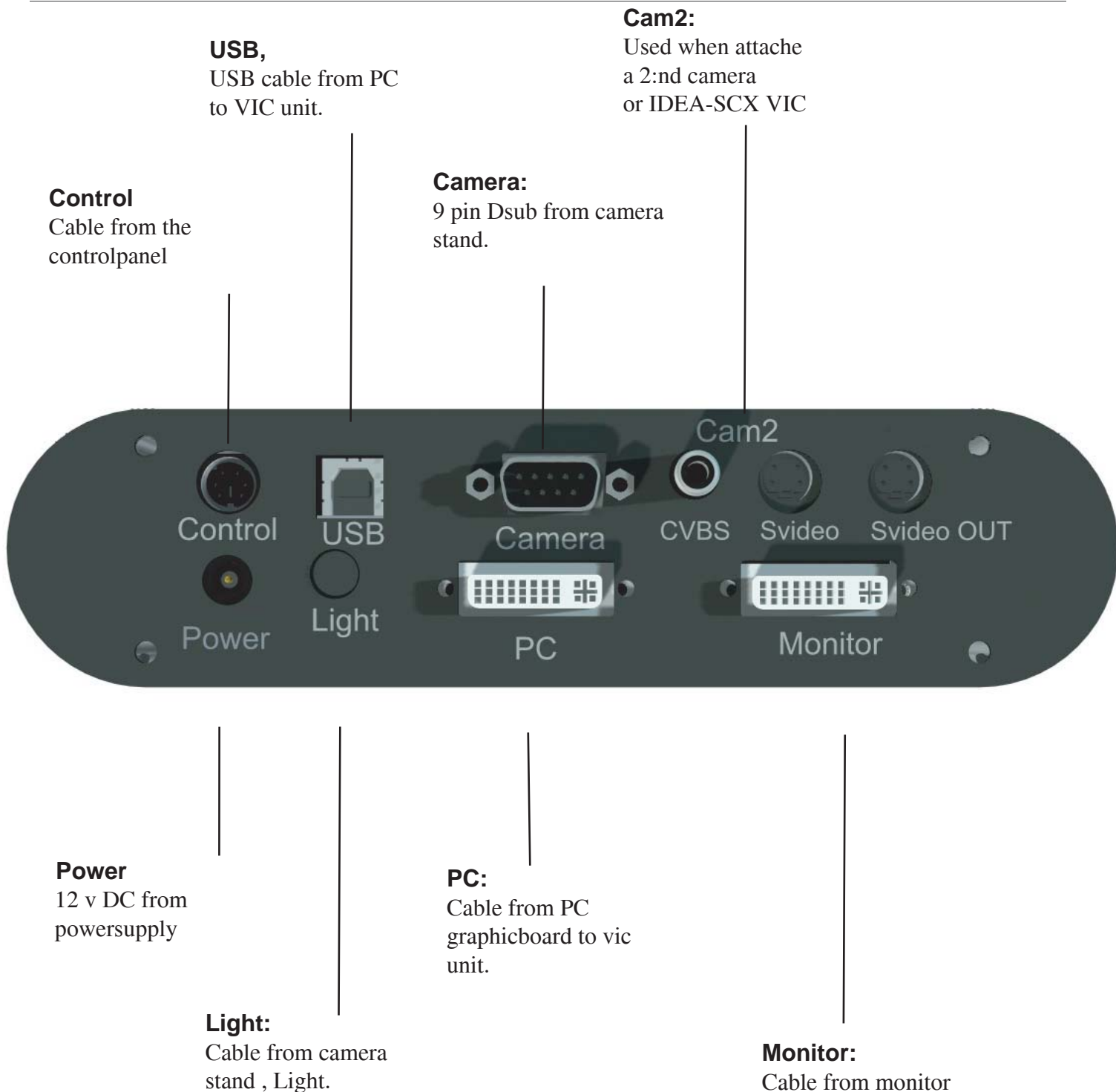
Assembly and connections

1. Place the XY table on suitable place
2. Put the camera stand into the 2 pins on the XY table, use the alley keys to tighten it, it is place on the right side on the camera stand.
3. Place the electronic unit (VIC) on suitable place
4. place the wesa and control panel to the monitor
5. Connect the 9 pin dsub from the camera to Camera to the VIC unit. Also connect the light cable from the camera stand to the LIGHT input to the VIC.
6. Connect the cable from controlpanel to Control
7. Connect monitor cable from monitor to Monitor
8. put the power cable from monitor to a power socket.
9. Put the power cable from the power supply to the socket and the dc cable from the power supply to Power to VIC
10. Start the monitor
11. Start IDEA-CX with the button on the left side of the controlpanel



SynSupport

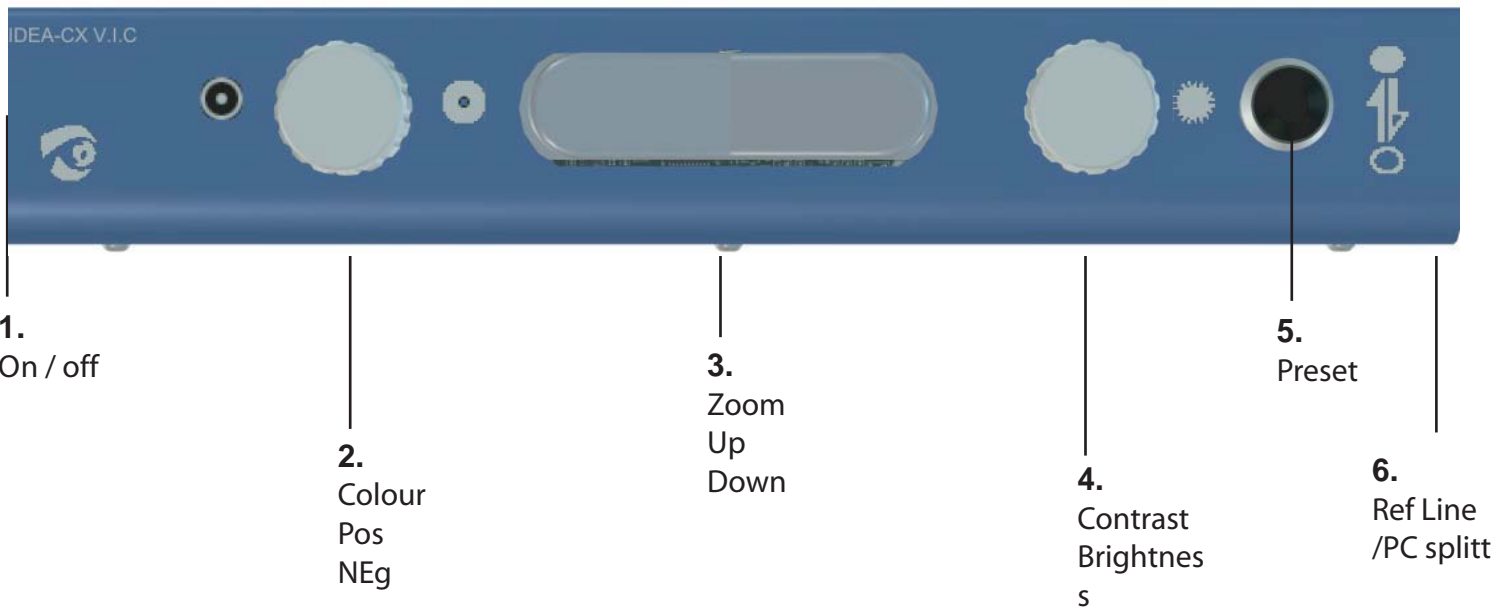
– Vi finns för syns skull





SynSupport

– Vi finns för syns skull



1.



On / OFF

Press to start the IDEA-CX VIC, a sound "beep-beep" indicates when the system is on.

Press the same button to switch it off.

2.



Text colour | Background

White	Black
Yellow	Black
Green	Black
Amber	Black

Text colour | Background

Black	White
Yellow	White
Green	Yellow
Yellow	Blue

Middle position
Colour



SynSupport

– Vi finns för syns skull

3. Zoom

This button increase and decrease the magnification of the camera.

Left side (-) decrease and right side (+) Increase.

The camera starts with a magnification of 3.3 times, One can go below this to have A wider overview.

4. Light and brightness

If the camera is in color mode, this control adjust the contrast, if the camera is in positive or negative mode is adjust the brightness.

5. Preset

Use the zoom button and go to desired magnification, hold the preset button until a sounds indicates the magnifications is stored. Use zoom button to go to another magnification, press the preset button fast and the camera will go to the magnification that are stored in memory.

6. Ref line and PC splitt

If no PC is connected this button handles the reference line.

1st press = Ref line on the top

2nd press = ref line in middle

3rd press = Ref line in bottom

4th press = Ref line disappears.

If the PC is connected this button handles the PC / Camera splitt function.

1st press = Camera / PC

2nd press = PC / Camera

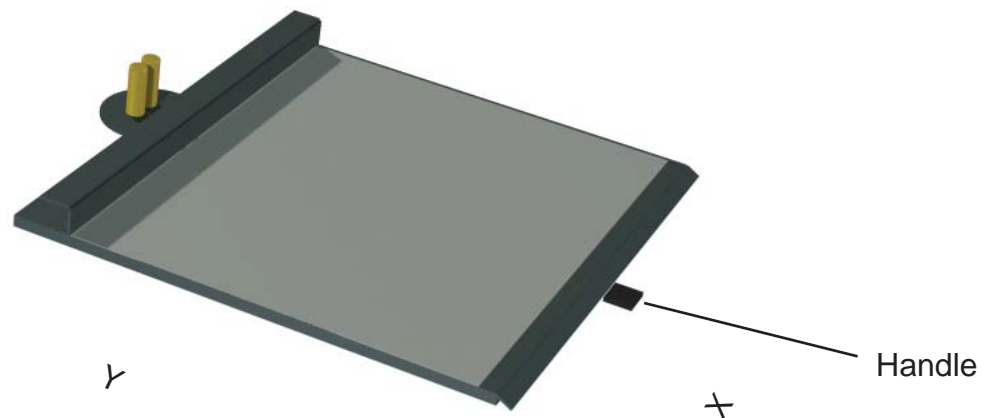
3rd press = Only PC

4th press = Only camera



SynSupport

– Vi finns för syns skull



XY Table:

Handle to the left:
XY table is locked in both Y and X.

Handle in the middle
X is free, Y is locked

Handle to the right.
Free movement in both X and Y



SynSupport

– Vi finns för syns skull

Software installation.

1. Insert the cd into CD unit. Program autostarts, if not click to the CD\setup.exe
2. Follow the instructions on the screen
3. Start the IDEA-CX VIC , press the PC splitt button until you have full PC picture
4. Insert the included USB cable to computer and to USB on the VIC unit.
5. Follow the instruktions on the screen,
6. all drivers are on the CD.



SynSupport

– Vi finns för syns skull

Distance camera (SCX VIC)

This chapter shows functions where the IDEA-CX has an distance camera attached.

The distance camera is included in IDEA-SCX vic or as an extra item to IDEA-CX VIC.

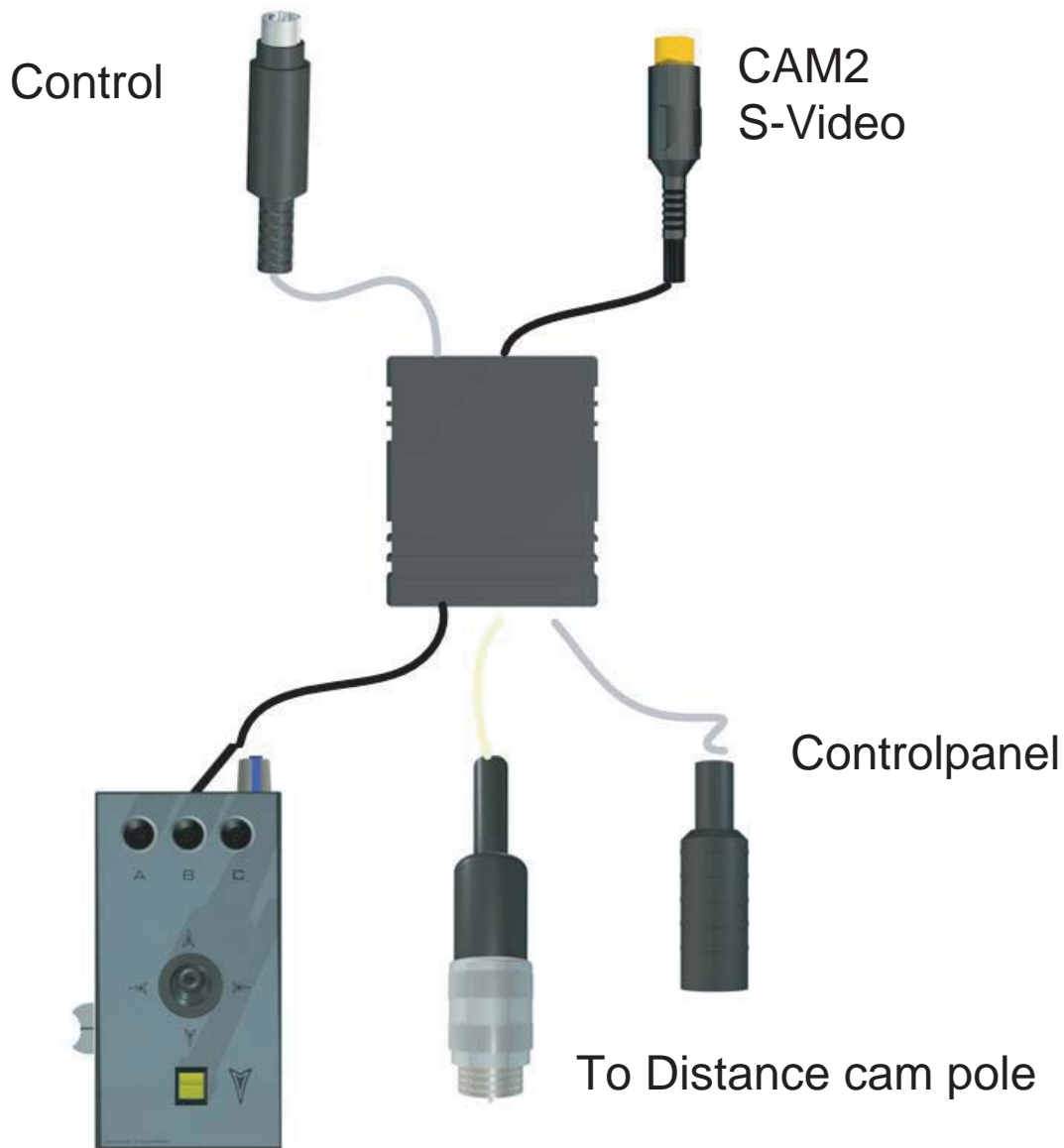




SynSupport

– Vi finns för syns skull

Distancecamera(SCX VIC)

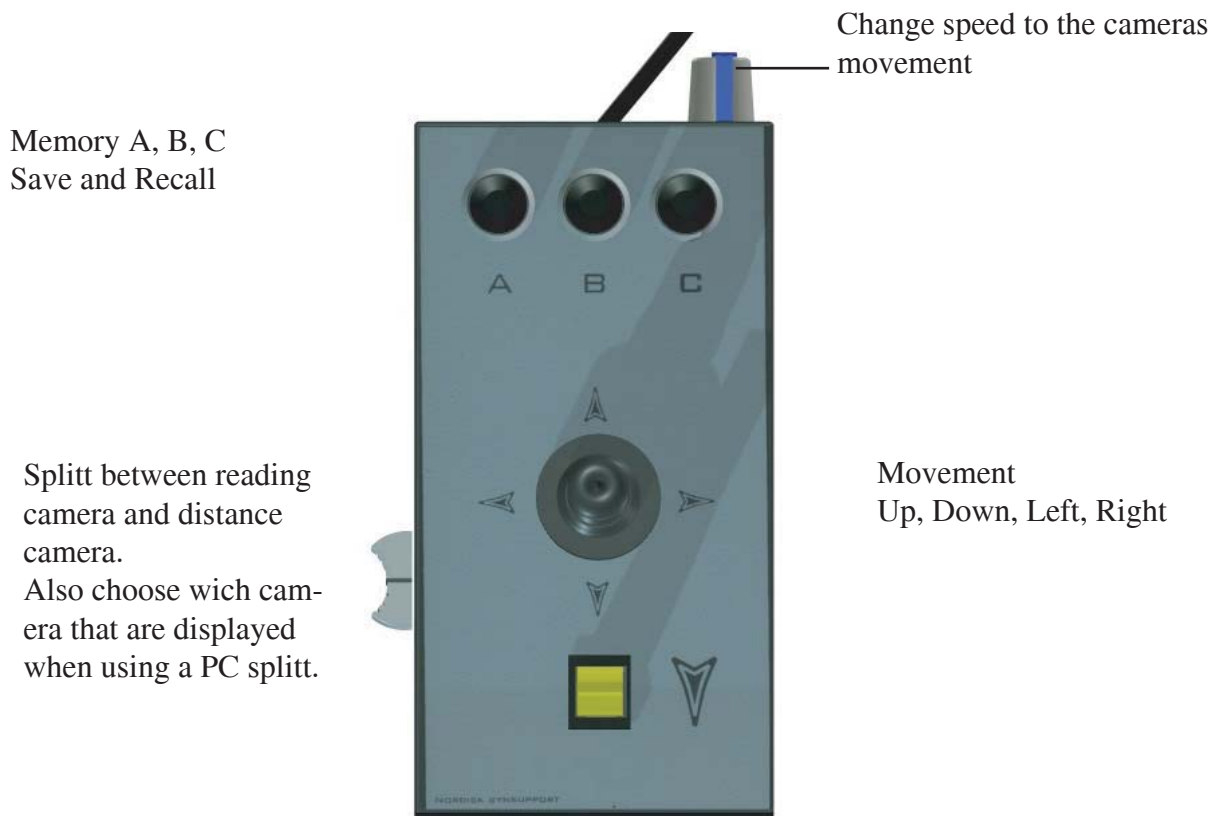




SynSupport

– Vi finns för syns skull

Distance camera (SCX VIC)



Save : Hold A, B or C down until a sounds indicated that your magnification and position has been stored.

Recall: Press A, B, or C, and camera moves to the stored position as well changes the magnification.

Other functions. (Press until a sound indicated)

A-C, Changes up/down to Down/up

A-B changes Left / Right to Right / left

B-C, Changes light compensation, to be used when camera is positioned to light background, window etc.

A-B-C, Camera moves to it's home position



SynSupport

– Vi finns för syns skull

Maintenance

Tread the magnification unit as a computer unit, don't clean with water,
Be careful under the camera lens so no scratched occurs .

Light/ bulb: WARNING : High Temperature

When changing the bulb (Halogen) be sure that the system has been off for and the halogen light has cooled down. Pull the bulb out and place a new one.
Be sure that the pins hits the sockets and do not bend.

Weight: 16 Kg

Magnification area : 1.5- 50 times linear

Max contrast, Max luminance .: Depending on monitor

Free working height : 300 mm under camera

Light on object: 3000 lux

Bulb: Osram / Phillips, 12 V, 20 W Halogen 60 degree

Power: 100-240 v

Power: Max 60 W

Updated frequencies : 60-75 HZ

Resolutions – 640x480 – 1280-1024